



## What's new with the HCS Approach - progress, challenges and next steps

Grant Rosoman – Greenpeace & HCS Approach Steering Group chair

### Why the High Carbon Stock Approach?

- Rising concern about tropical deforestation – we are facing a biodiversity and climate change crisis
- Global brands such as Nestle, Ferrero, Unilever and P&G make policy commitments to *No Deforestation*, & more recently the NY Declaration on Forests
- Producer companies follow GAR's 2011 *No Deforestation* commitment including Wilmar, APP, Cargill, NPOL, Agropalma, and Musim Mas
- Need to know what is forest – thus HCS methodology emerged along with new multi-stakeholder collaboration

1

## Key Question: Which areas are forest?



## What is the HCS Approach

- The HCS Approach is a tool to support land use planning – it is not a carbon assessment
- Uses vegetation density, structure and composition, above ground carbon estimates, and forest patch analysis to identify viable forest areas from degraded (former forest) lands.
- Integrates with FPIC and community land use mapping, HCV and peat land assessments, and riparian zones
- pragmatically implements *No Deforestation* in the humid tropics across commodities - palm oil, pulp & paper, rubber, soya, etc
- Science-based with advice and expert reviews from international scientists – HCSA Toolkit for full details

3

## Two phases

### Phase 1

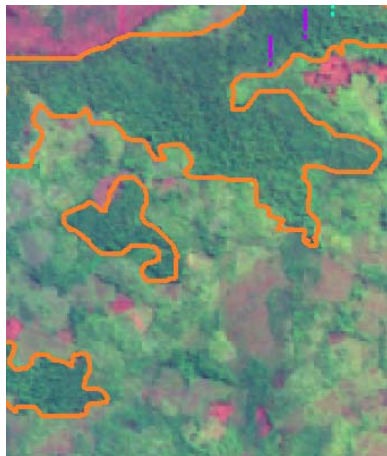
Vegetation stratification  
to identify potential HCS  
forest areas

### Phase 2

HCS forest patch  
analysis and  
conservation

4

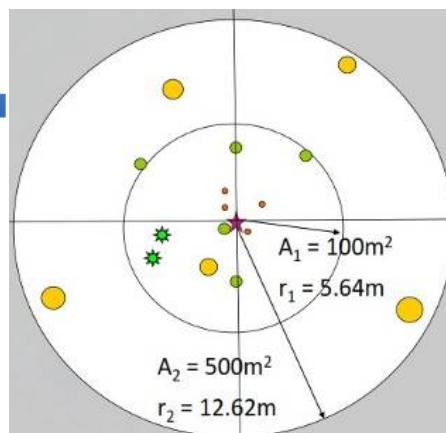
## Phase 1: View from above + measurements on the ground



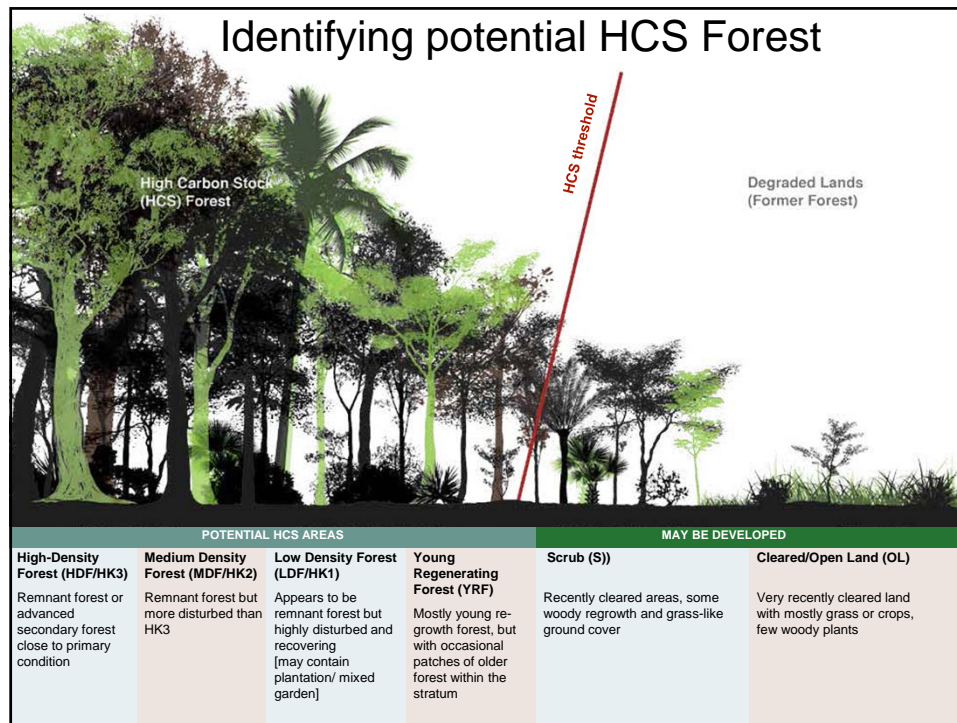
A combined unsupervised and supervised analysis of satellite images using visual attributes to provisionally stratify vegetation into 6 classes



Field plots established to estimate Above Ground Biomass and calibrate with satellite data







## MDF: Medium Density Forest

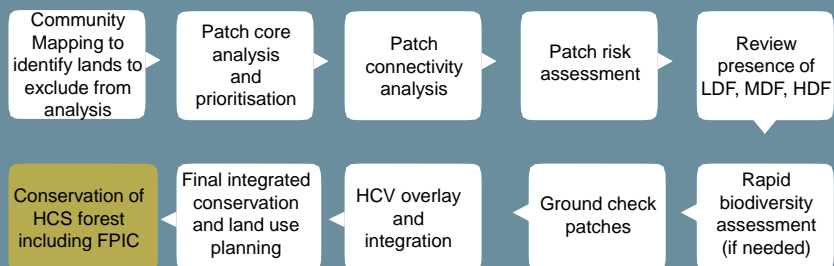


## S: Scrub

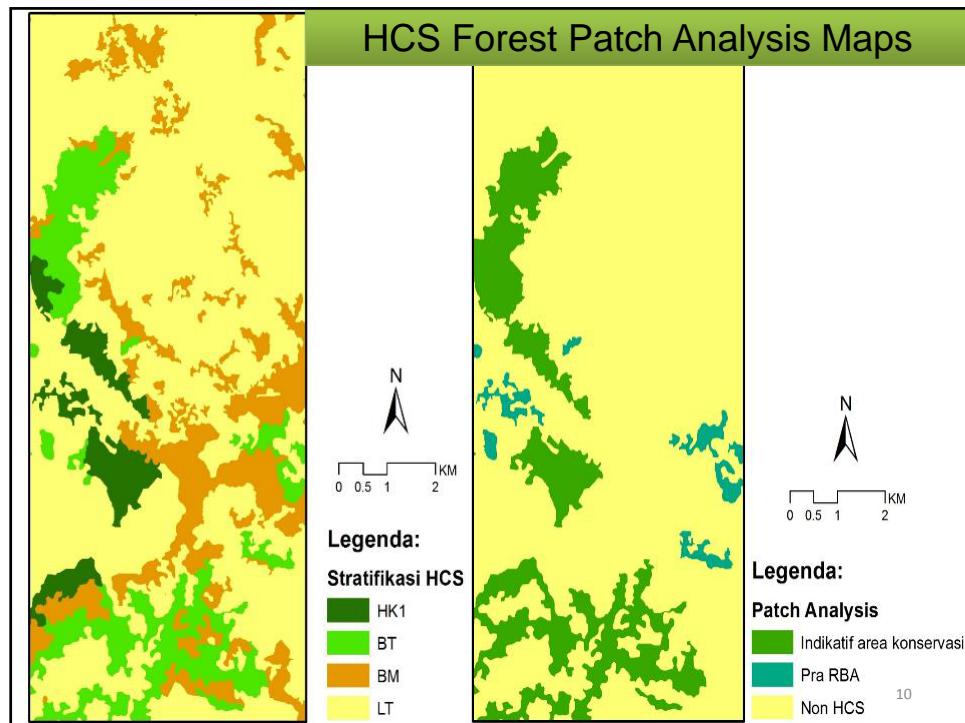


8

## Phase 2: HCS forest patch analysis and conservation process



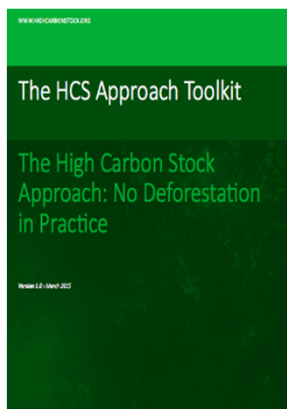
9



## Progress with the HCS Approach

- Global multi-stakeholder HCS Approach Steering Group to oversee the methodology – membership growing...
- Over 60 HCS assessments, 5 countries, millions of ha

### Steering Group Members



## Progress and Challenges with HCSA

- Working Groups on key issues of:
  - ✧ Integration of HCS/HCV/FPIC →
  - ✧ High Forest Cover regions
  - ✧ Quality Assurance
  - ✧ Smallholders and Communities
  - ✧ Science Advisory Committee
  - ✧ 'Convergence' group
- Expanding engagement with governments and manufacturer and retail companies to get their critical input and support
- Expanding engagement with other sectors and regions – rubber, soya – Africa and Latin America



12

## HCS Approach and HCS Study 'Convergence' process update

- **General commitment on a goal of one methodology for No Def**
- **Common ground but different focus:** HCSA 'No Deforestation', whereas HCS Study GHG emission and 'sustainable development'
- **Convergence:** biomass estimates, use of LiDAR, importance of soil carbon, protection primary and older secondary forest, HCS forest patch analysis, strong FPIC and livelihoods, and HCV integration and land use planning
- **Different:** young regenerating forest conservation, carbon neutrality
- **Next Steps:** further discussion, collaboration in Working Groups esp. to address Smallholder and forest conservation challenges, HSCA review consider convergence aspects, consider joint and/or parallel implementation trials



## Going forward with the HCS Approach

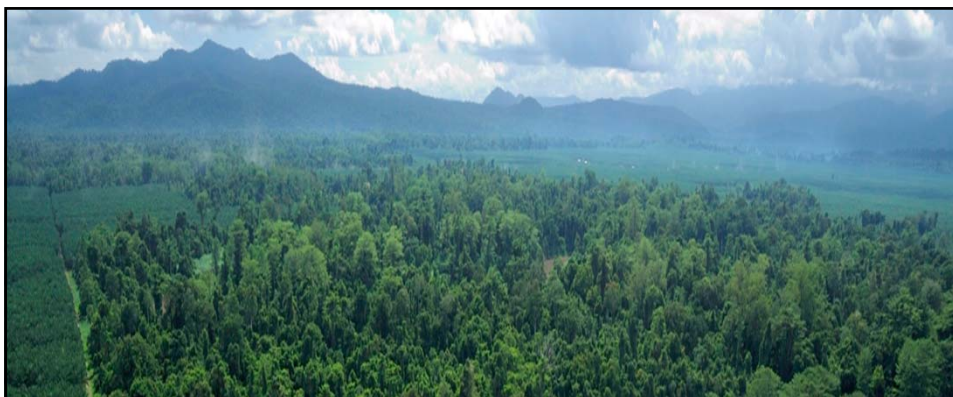
| Key Issue   | How being addressed  |
|---|--|
| Community rights, land use and support for HCS forest conservation              | <i>FPIC integration, land use planning, food security, benefits/incentives</i>   |
| Achieving the long-term conservation of HCS forest (and HCV areas)              | <i>Innovative approaches with communities, laws and regulations – government support</i>   |
| Smallholder engagement and support  | <i>New working group including smallholder reps, link with other smallholder initiatives</i>   |
| Ensuring the methodology is state-of-the-art, credible, practical and efficient | <i>Revision - new science, field experience, trials, working group and HCS study recommendations – Toolkit v2. Also FPIC/HCV/HCS integration</i> |

## Going forward with the HCS Approach (2)

| Key Issue   | How being addressed   |
|---|---|
| Palm oil development in High Forest Cover regions | <i>Working group addressing: framing question, case studies</i>       |
| One broadly supported HCS methodology             | <i>'convergence' process with HCS Study and further science input</i> |
| HCSA being implemented through other initiatives  | <i>Engagement with RSPO (incl. Next), POIG, FSC, HCVRN, etc</i>       |
| Ensuring HCS Approach has government support      | <i>Government engagement, input and collaboration, IPOP</i>           |
| Ensuring consistent and quality implementation    | <i>Rolling out Quality Assurance and transparency requirements</i>    |

15





Thank you

For more information:  
Visit us at booth 16 or  
[www.highcarbonstock.org](http://www.highcarbonstock.org)

16